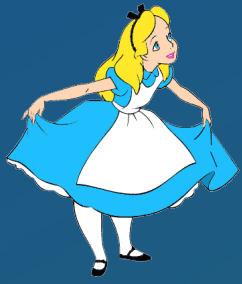


An illustration of Alice in Wonderland. Alice, a young girl with blonde hair in a blue dress with a white apron, stands on a pink path in a dark, surreal forest. The trees have large, colorful flowers growing from their trunks. Several signs are attached to the trees, including 'UP', 'DOWN', 'YONDER', 'THAT WAY', and 'THIS WAY'. The title text is overlaid on the scene.

THE WHO, WHAT & WHERE OF GRANTS MANAGEMENT AT DUKE

PART 2: POST-AWARD



OUR JOURNEY THROUGH GRANTSLAND

- WHO WE ARE
- WHAT WE DO TO FACILITATE SPONSORED PROJECTS AT DUKE
- WHERE YOU CAN FIND HELP WHEN NEEDED





Award Setup & Project Begins

We received the notification of funding, now what?

Award Setup

TBS



Project Closeout

MNMC IT

PAMC IT

SOM IT

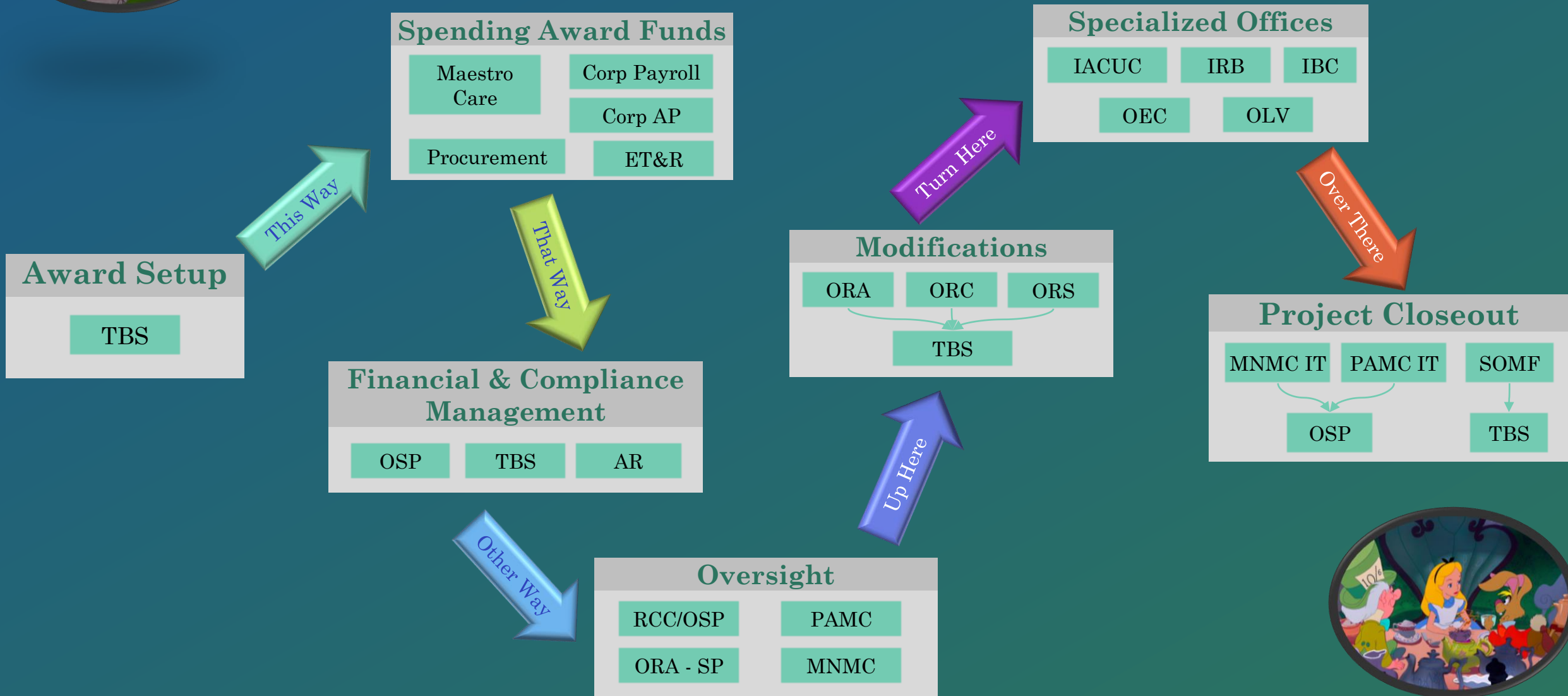
OSP

TBS





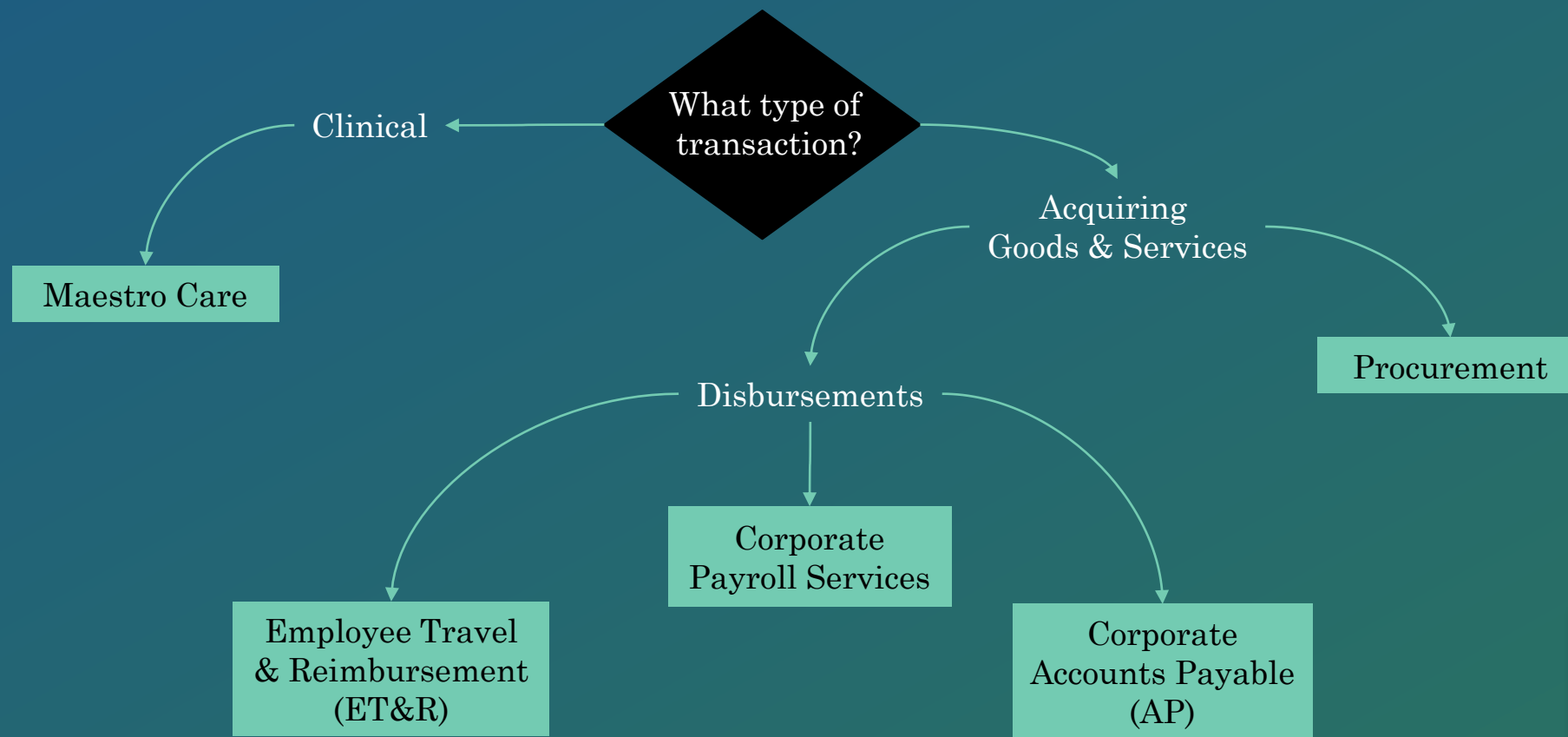
Award Setup & Project Begins





SPENDING AWARD FUNDS

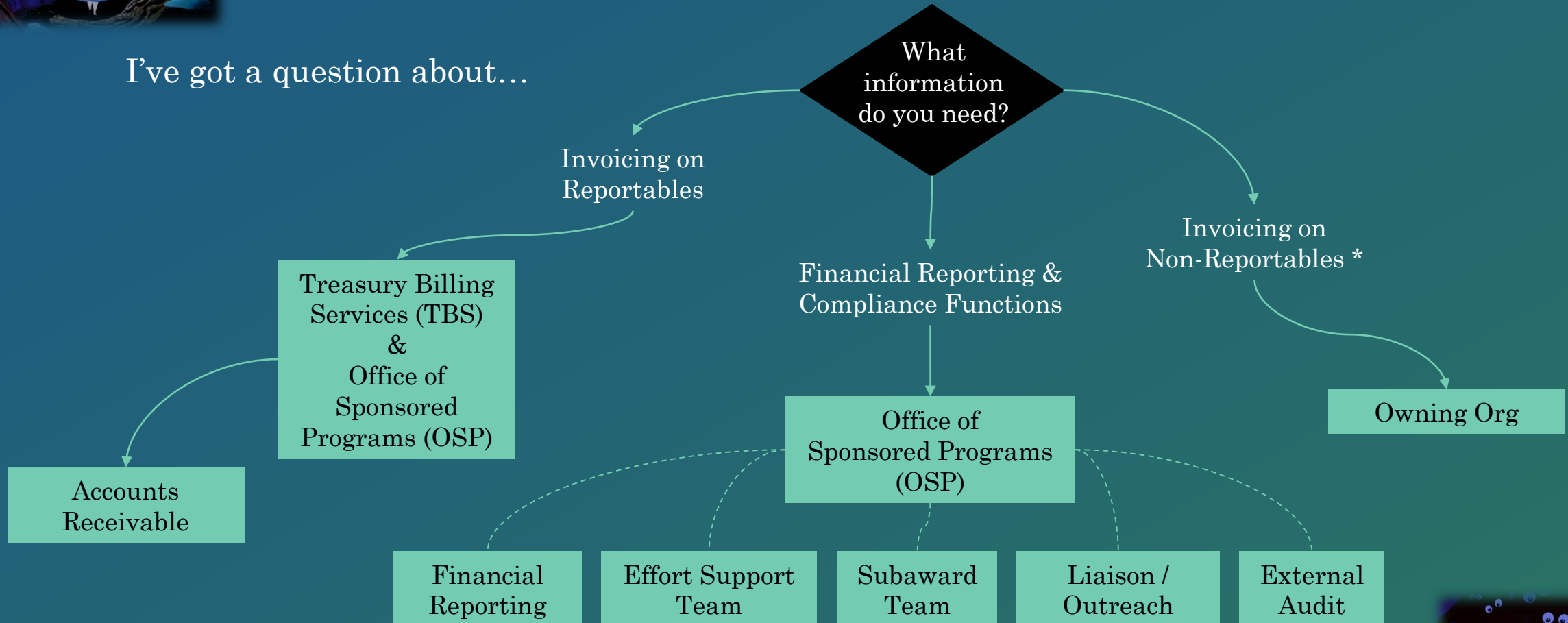
The project is in process but there is a transaction that needs to be addressed...





FINANCIAL & COMPLIANCE MANAGEMENT

I've got a question about...



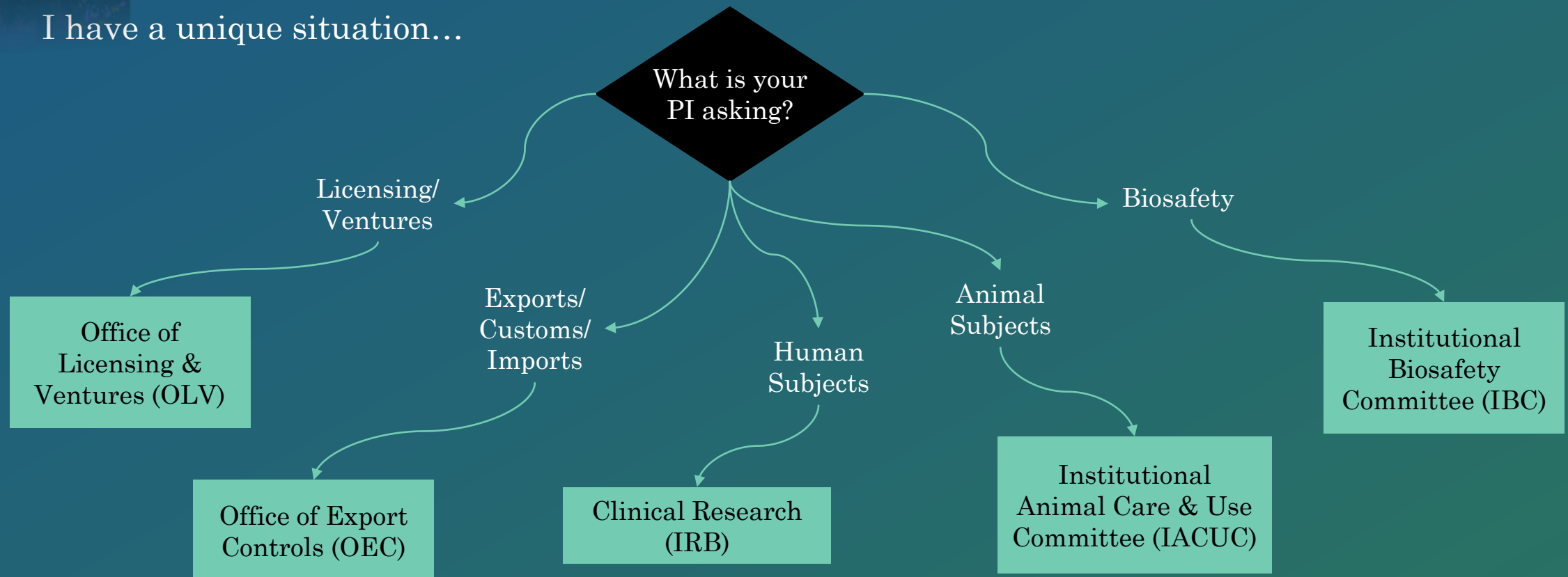
* Non-Reportable projects refer to WBSEs in the 29x and 39x ranges; they do not require institutional reporting.





SPECIFIC CONSIDERATIONS

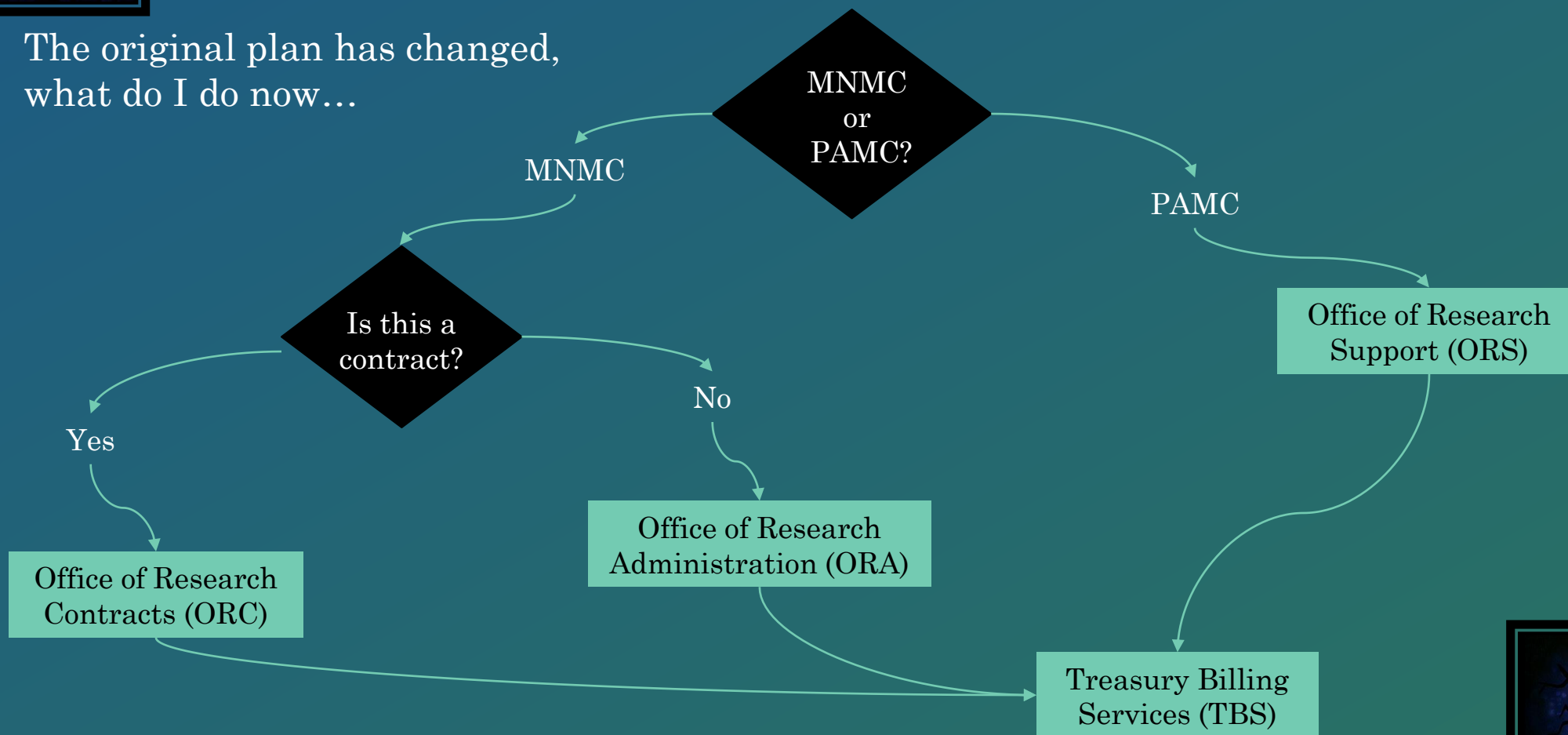
I have a unique situation...





WHEN TERMS & CONDITIONS CHANGE

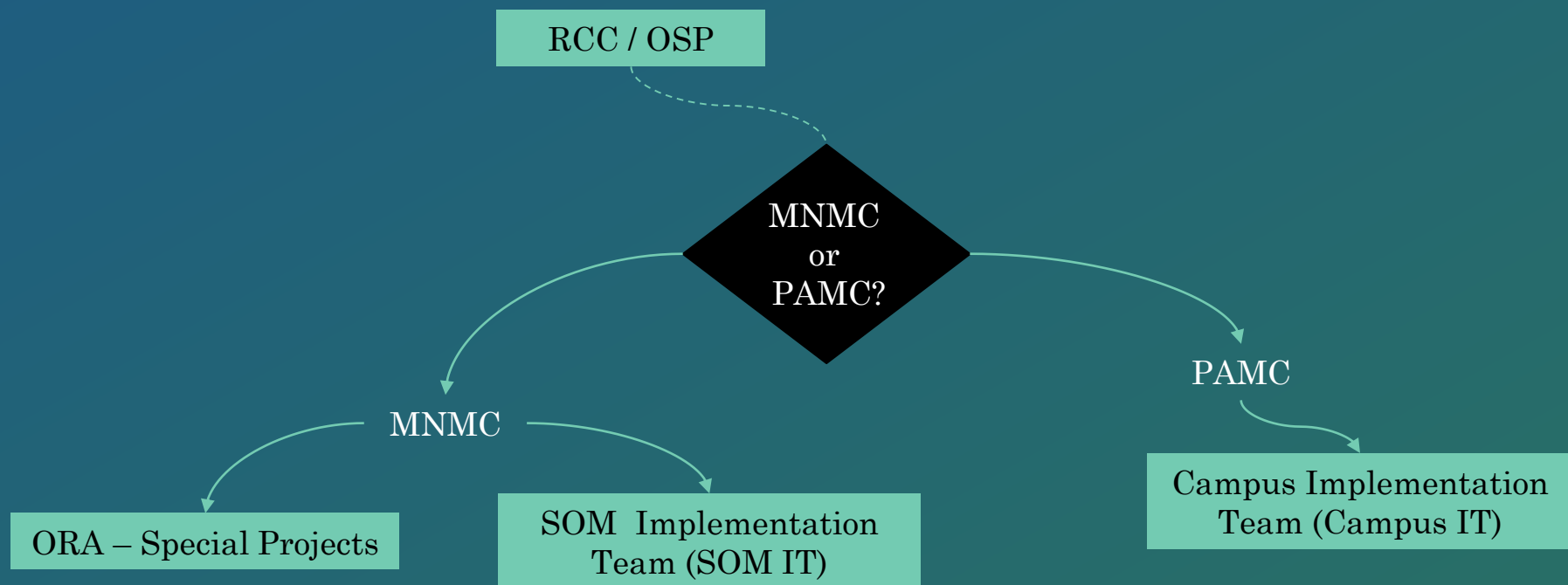
The original plan has changed,
what do I do now...





INSTITUTIONAL & MANAGEMENT CENTER OVERSIGHT

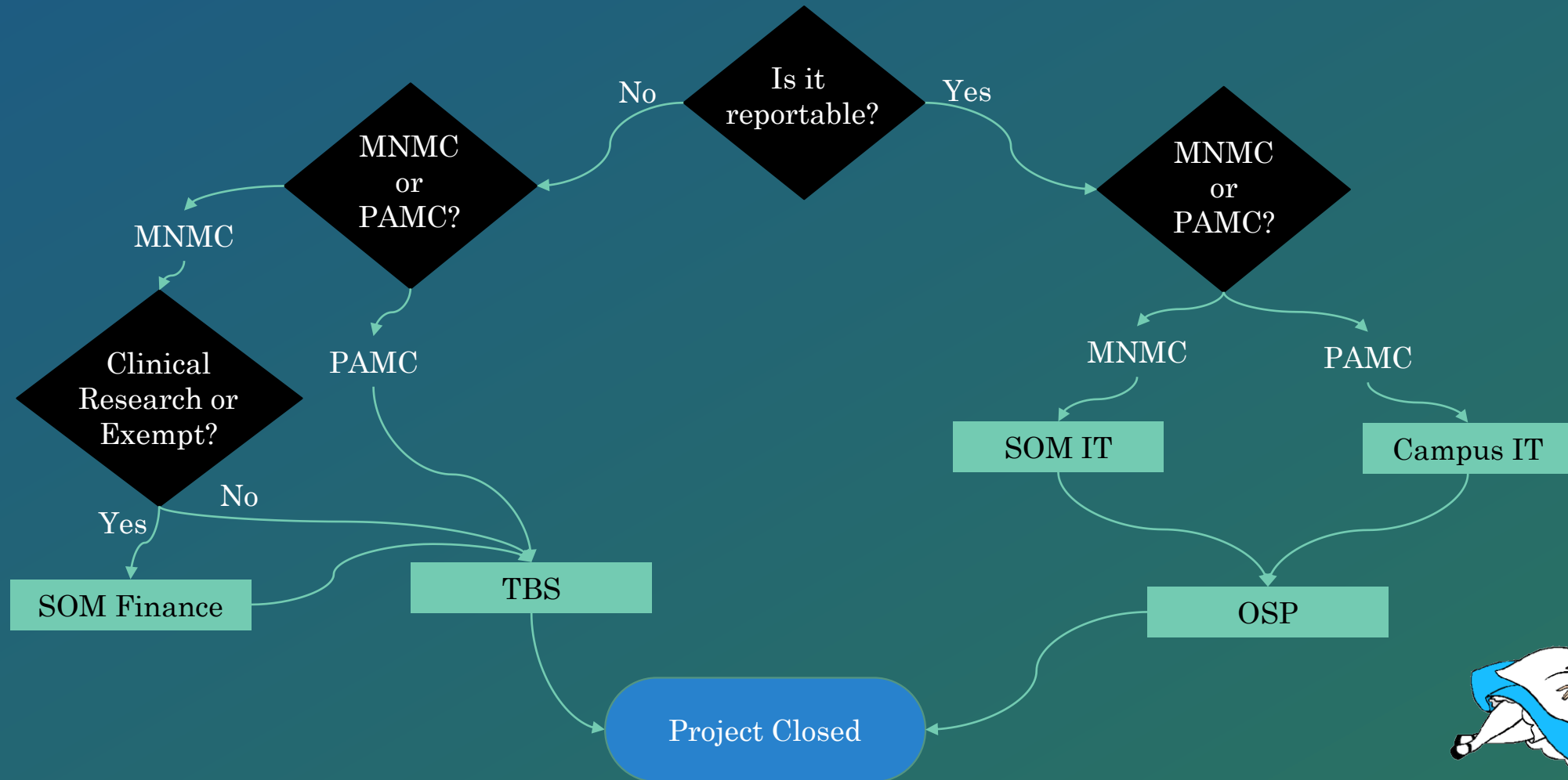
What compliance oversight/monitoring is provided and who can I contact for guidance...





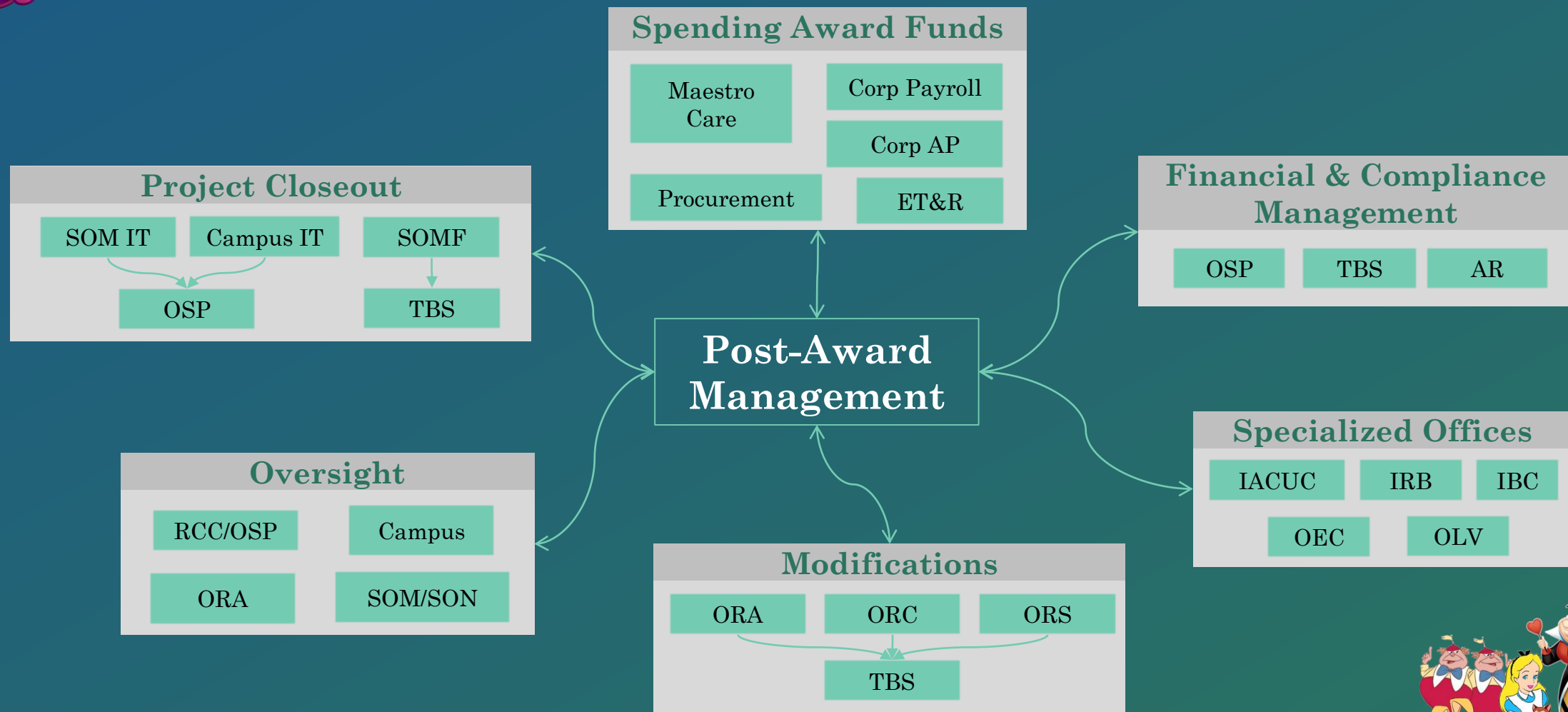
TIME TO CLOSE THE PROJECT

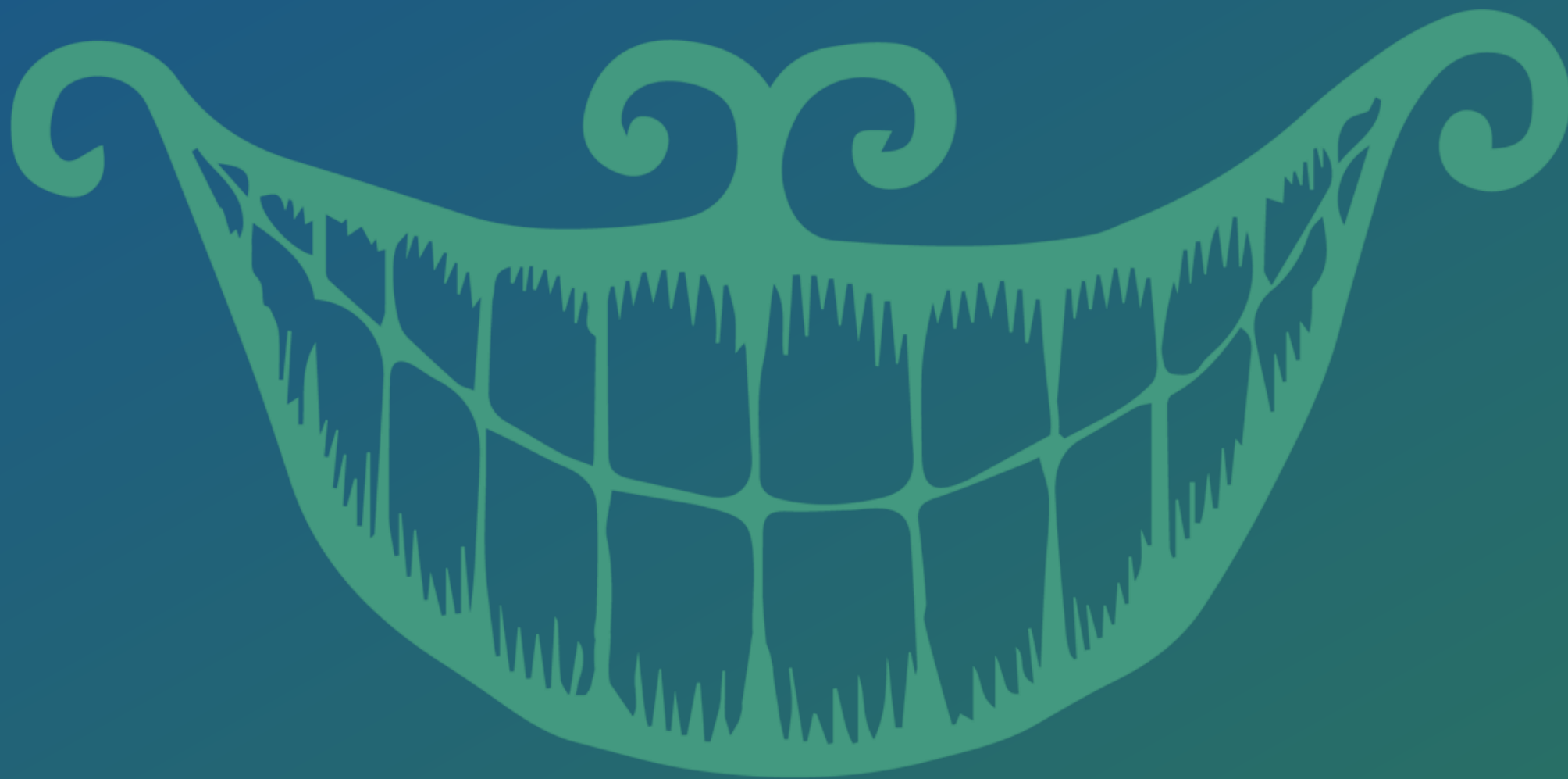
The project is coming to an end...





Our Post-Award Journey





WE'RE ALL MAD HERE