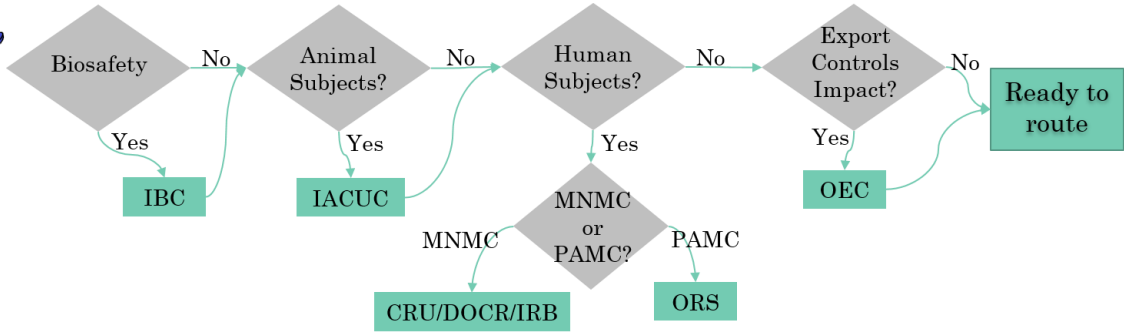


THE WHO, WHAT & WHERE OF GRANTS MANAGEMENT AT DUKE

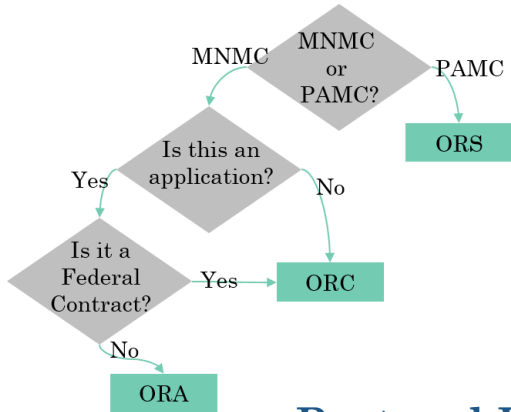
PART I: PRE-AWARD



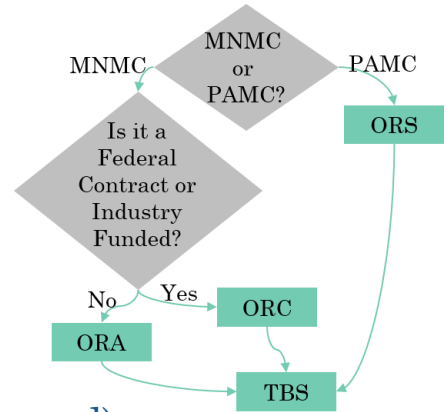
Specialized Offices:



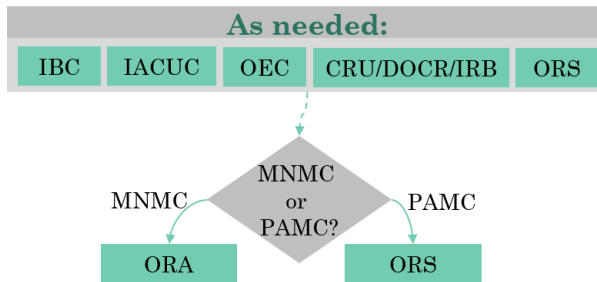
Pre-Award Offices:



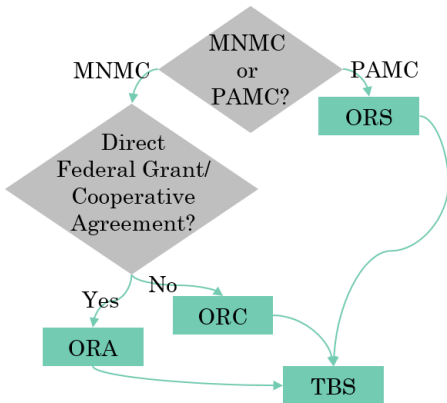
Requests for Pre-Award Codes:



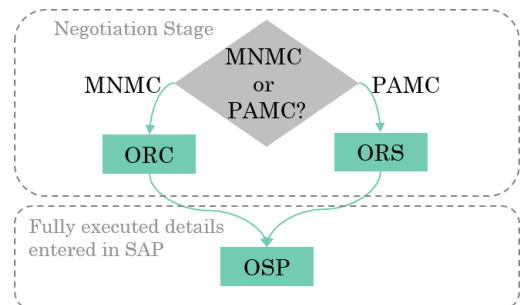
Protocol Reviews (JIT/award):



Notification of Funding:



Outgoing Subawards:



Acronym	Office	Website	Phone #	Email(s)
ORA*	Office of Research Administration	research.som.duke.edu	(919) 684-5175	gmail@mc.duke.edu
ORC*	Office of Research Contracts	https://medschool.duke.edu/research/research-support-offices/office-research-contracts	(919) 681-0867	<i>find your contact at:</i> https://medschool.duke.edu/research/research-support-offices/office-research-contracts/meet-team
ORS**	Office of Research Support	ors.duke.edu	(919) 684-3030	<i>find your contact at:</i> https://ors.duke.edu/orsmanual/ors-assignments-2
CRU	Clinical Research Units	Department Specific – see link for master list of contacts: https://medschool.duke.edu/research/clinical-and-translational-research/duke-office-clinical-research/crus-and-oos		
DOCR	Duke Office of Clinical Research	docr.som.duke.edu	(919) 681-6665	DOCR.Help@dm.duke.edu
IACUC	Institutional Animal Care and Use Committee	https://sites.duke.edu/oawa/	(919) 668-6720	IACUC@Duke.edu
IBC	Institutional Biosafety Committee	safety.duke.edu/biological-safety	(919) 684-8822	See website
IRB	Institutional Review Board	MNMC use: irb.duhs.duke.edu PAMC use: campusirb.duke.edu		
OEC	Office of Export Controls	export.duke.edu	See website	export@duke.edu
OSP	Office of Sponsored Programs	http://finance.duke.edu/research/departments/osp.php	(919) 684-5442	SponsoredPrograms@duke.edu
TBS	Treasury Billing Services			tbsawardsetup@duke.edu

* MNMC only

**PAMC only