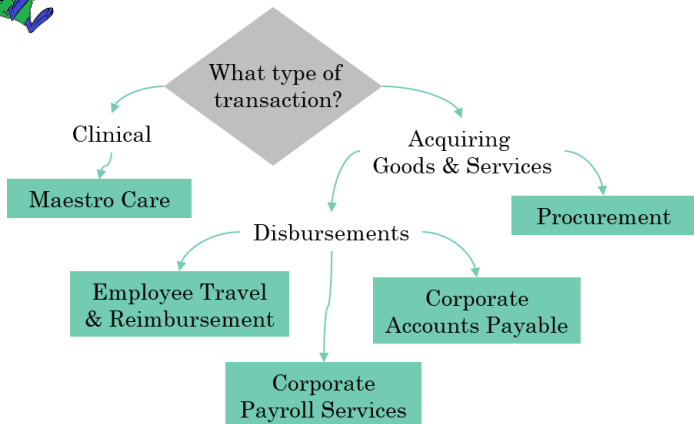


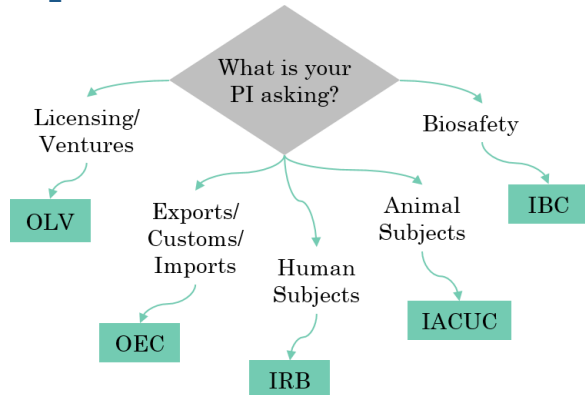
# THE WHO, WHAT & WHERE OF GRANTS MANAGEMENT AT DUKE PART 2: POST-AWARD



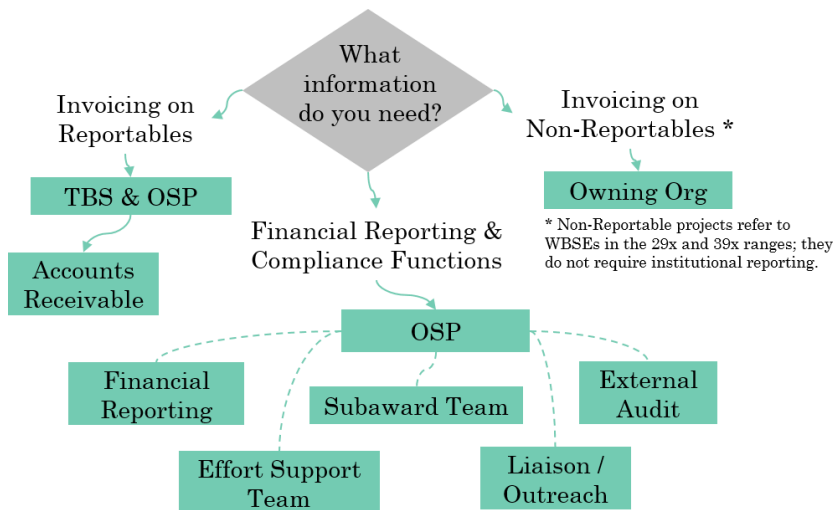
## Spending Award Funds:



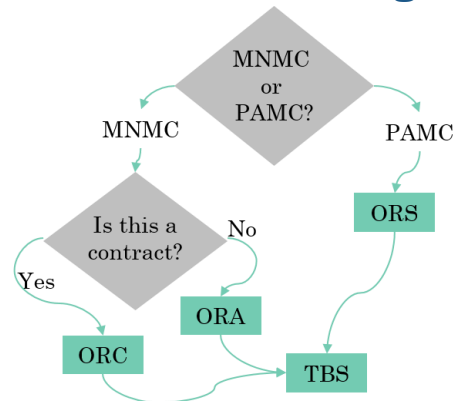
## Specific Considerations:



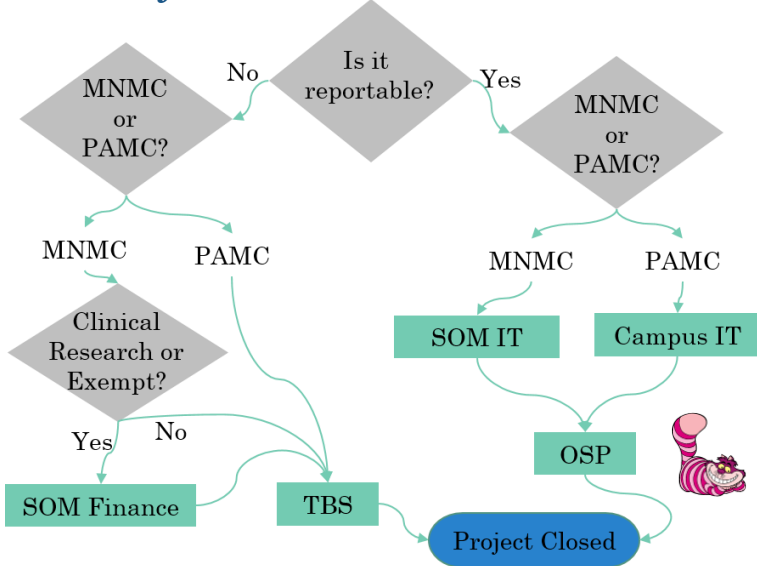
## Financial & Compliance Management:



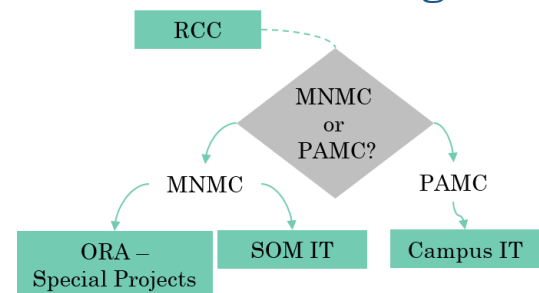
## When Terms & Conditions Change:



## Project End & Closeout:



## Institutional & Management Center Oversight:



# THE WHO, WHAT & WHERE OF GRANTS MANAGEMENT AT DUKE – PART 2: POST-AWARD

Acronym	Office	Website	Phone #	Email(s)
AP	Accounts Payable	<a href="http://finance.duke.edu/procurement/departments/ap.php">finance.duke.edu/procurement/departments/ap.php</a>	(919) 684-3112	AccountsPayabl@duke.edu & Aponlinecheck@duke.edu
Campus IT	Campus Implementation Team	Email for assistance	Email for assistance	Campus-Implementation@duke.edu
Corporate Payroll	Corporate Payroll Services	<a href="http://payroll.duke.edu">payroll.duke.edu</a>	(919) 684-2642	Payroll@duke.edu
ET&R	Employee Travel & Reimbursement	<a href="http://finance.duke.edu/travel">finance.duke.edu/travel</a>	(919) 668-3877	EmployeeTravel@duke.edu
IACUC	Institutional Animal Care and Use Committee	<a href="http://sites.duke.edu/oawa/">sites.duke.edu/oawa/</a>	(919) 668-6720	IACUC@duke.edu
IBC	Institutional Biosafety Committee	<a href="http://safety.duke.edu/biological-safety">safety.duke.edu/biological-safety</a>	(919) 684-8822	See website
IRB	Institutional Review Board	MNMC use: <a href="https://irb.duhs.duke.edu/">https://irb.duhs.duke.edu/</a> PAMC use: <a href="https://campusirb.duke.edu/">https://campusirb.duke.edu/</a>		
OEC	Office of Export Controls	<a href="http://export.duke.edu/">export.duke.edu/</a>	See website	export@duke.edu
OLV	Office of Licensing & Ventures	<a href="http://olv.duke.edu/">olv.duke.edu/</a>	(919) 681-7578	info-olv@duke.edu
ORA*	Office of Research Administration	<a href="http://medschool.duke.edu/research/research-support-offices/office-research-administration">medschool.duke.edu/research/research-support-offices/office-research-administration</a>	(919) 684-5175	gmail@mc.duke.edu
ORC*	Office of Research Contracts	<a href="http://medschool.duke.edu/research/research-support-offices/office-research-contracts">medschool.duke.edu/research/research-support-offices/office-research-contracts</a>	(919) 681-0867	<i>find your contact at:</i> <a href="https://medschool.duke.edu/research/research-support-offices/office-research-contracts/meet-team">https://medschool.duke.edu/research/research-support-offices/office-research-contracts/meet-team</a>
ORS**	Office of Research Support	<a href="http://ors.duke.edu/">ors.duke.edu/</a>	(919) 684-3030	<i>find your contact at:</i> <a href="https://ors.duke.edu/orsmanual/ors-assignments-2">https://ors.duke.edu/orsmanual/ors-assignments-2</a>
Procurement	Procurement & Supply Chain Management	<a href="http://finance.duke.edu/procurement/">finance.duke.edu/procurement/</a>	(919) 681-5900	Procurement@duke.edu
OSP	Office of Sponsored Programs	<a href="http://finance.duke.edu/research/departments/osp.php">finance.duke.edu/research/departments/osp.php</a>	(919) 684-5442	SponsoredPrograms@duke.edu ecrt-support@duke.edu ospsubcontractmgmt@duke.edu accountsreceivable@duke.edu
SOM IT	School of Medicine Implementation Team	Email for assistance	Email for assistance	SOM.Implementation@duke.edu
SOMF	School of Medicine Finance Office	<a href="http://medschool.duke.edu/about-us/leadership-and-administration/finance-office">medschool.duke.edu/about-us/leadership-and-administration/finance-office</a>		
TBS	Treasury Billing Services	Email for assistance		tbsawardsetup@duke.edu tbsbilling@duke.edu

\* MNMC (SOM/SON) only

\*\*PAMC only

2017 Symposium for Research Administrators