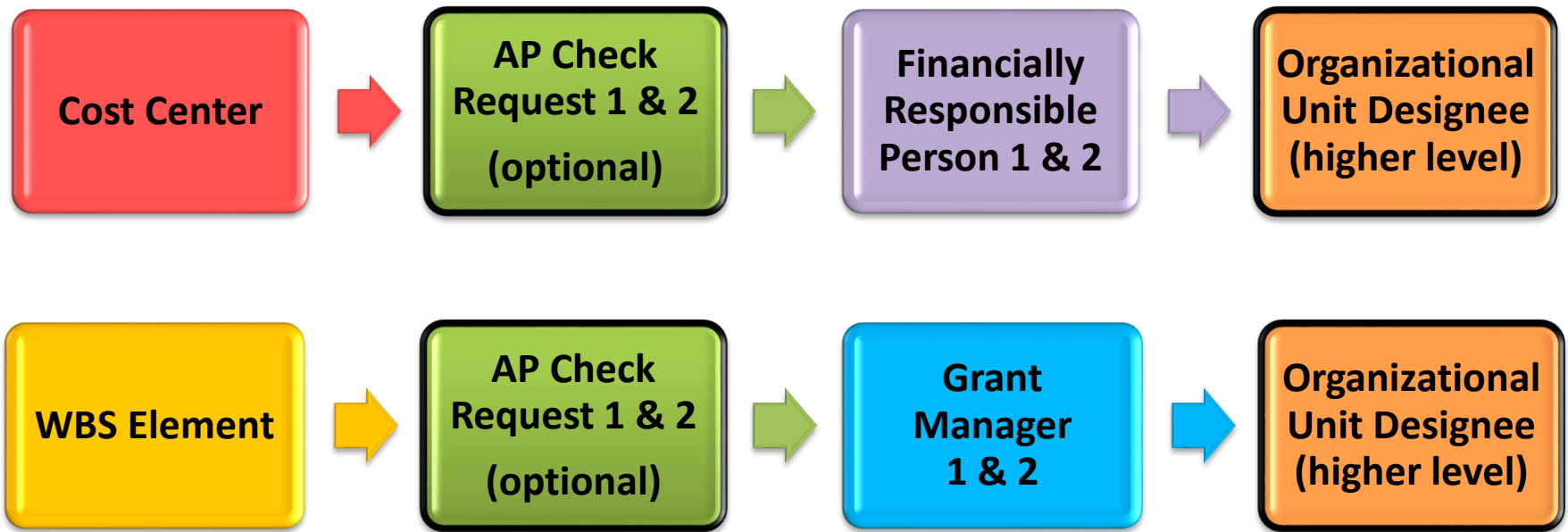


# Funding Source Approval Workflow

## *Who does it route to?*



*\* Please note: regardless of the type used, when using master data, funding source approval is person specific. When using the organizational unit designee, funding source data is position based.*

- AP 1, AP 2, and the Organizational Unit Designee will be the same role whether it is a Cost Center or WBS element.
- If a data field is open, workflow will find the first completed data field.